

Two Output professional DVI Distribution Amplifier supporting HDCP encryption and HDMI 1.3a compliant signals

Part No: 9132 0002

Highlight features

- Cable loss compensation at Input
- Built-in Advanced EDID Management
- Pixel Accurate Reclocking
- HDCP compliant

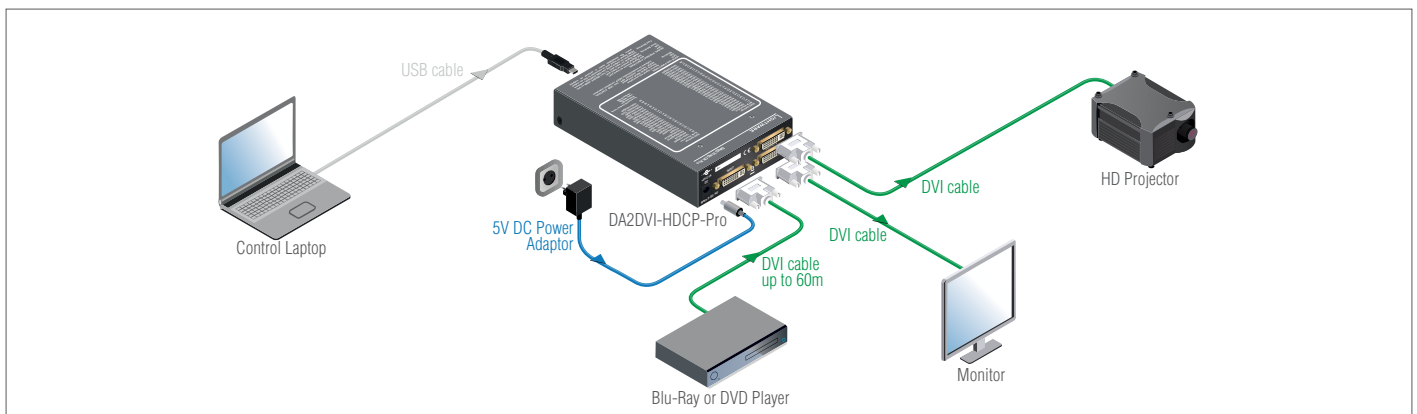


Lightware DA2DVI-HDCP-Pro is a multifunctional distribution amplifier with built-in EDID Management and Pixel Accurate Reclocking, supporting DVI and HDMI 1.3a signals with or without HDCP encryption. It automatically compensates for up to 60 meters of DVI copper cable, hence no adjustment is needed by the user. The Output signal is reclocked and stabilized using Lightware's Pixel Accurate Reclocking technology to remove jitter caused by long cables or poor quality DVI sources.

Thanks to the Advanced EDID Management, DA2DVI-HDCP-Pro can emulate any DVI display for continuous video Output, even if the attached display is disconnected or powered down. The EDID memories from 01 to 50 are factory preset, the memories from 51 to 98 are user programmable. Memory 00 is transparent for output 1 and Memory 99 is for output 2, which means that the attached display device's EDID (monitor or projector) will be reported to the source. With the Easy EDID Creator (PC software) the users can create their own EDID by completing four simple steps. More experienced users can use the Advanced EDID Editor software to manage every possible setting in the EDID, which they can upload to the memory of the DA2DVI-HDCP-Pro.

DA2DVI-HDCP-Pro can be rack mounted or used standalone. The unit is equipped with the highest grade gold plated connectors to ensure reliable connection.

Stand alone operation



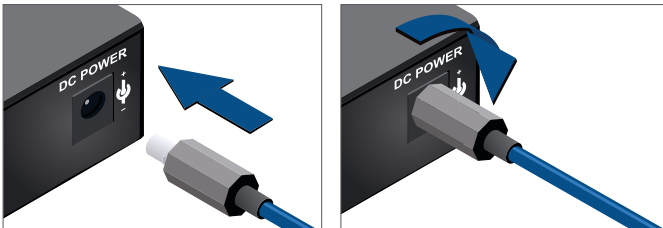
Applications

- Rental and staging
- Military
- Medical
- Digital Signage
- Multiroom video
- Conference rooms, collaborative telepresence

Features

- Up to 60 meters cable loss compensation at Input
- Advanced EDID Management
- Pixel Accurate Reclocking:
 - Intra-pair skew compensation
 - Inter-pair skew compensation
 - TMDS and clock jitter compensation
- Two identical Outputs
- HDCP compliant
- HDCP enable/disable function
- HDCP key-count
- Source, Signal, HDCP and Monitor detection LEDs
- USB control
- Can be daisy chained up to 4 devices
- Deep color support
- Mounting options for rack, furniture or truss
- Locking DC connector

Locking DC plug



Twist 90° clockwise to lock

Specifications

Data rate per TMDS channel:	2.25 Gbps
Max resolution:	1920 x 1200 or 2048 x 1080
Reclocking:	Yes, Pixel Accurate Reclocking
HDCP pass through:	Yes
Input cable equalization:	Automatic adaptive, +40 dB max
EDID memory:	100 EDID
Programmable EDID memory:	48 EDID
EDID support:	256 byte Extended EDID
+5V Power on DVI Outputs:	500 mA
Power:	Universal power adaptor, DC 5V 2.5A
Power consumption:	4 W (typ) 11 W (max)
Enclosure:	1 mm metal
Dimensions:	120 W x 180 D x 42 H mm
Net weight:	680 g
Compliance:	CE
Warranty:	3 years

Connectors

Input / Output:	29 pole DVI-I connector (digital only)
USB:	Mini USB-B female connector
Power:	Locking DC connector (2.5 / 5.5 mm)

Front and rear view



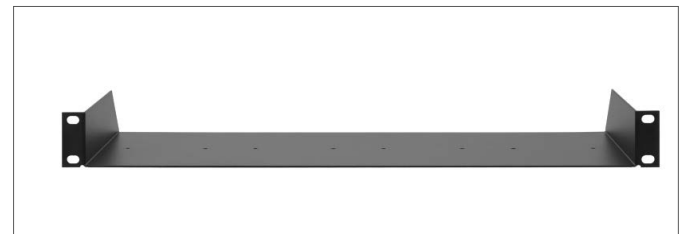
Supplied accessory



PSU-5VU Universal DC adaptor (Part No: 1180 0049)

Wall power adaptor with interchangeable plug for international use.
Universal input: 100-240 V AC, 50-60 Hz, Output: 5 V DC, 2.5 A

Optional accessories



Rack shelf (Part No: 5240 0269)

The 1U high rack shelf provides mounting holes for fastening two half-rack or four quarter-rack sized units.